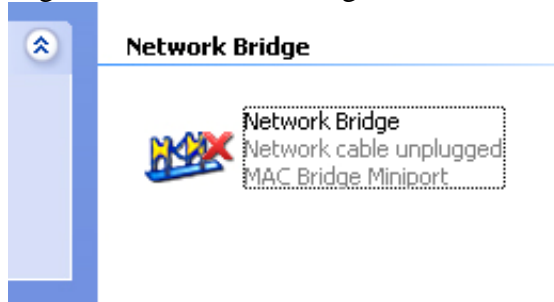
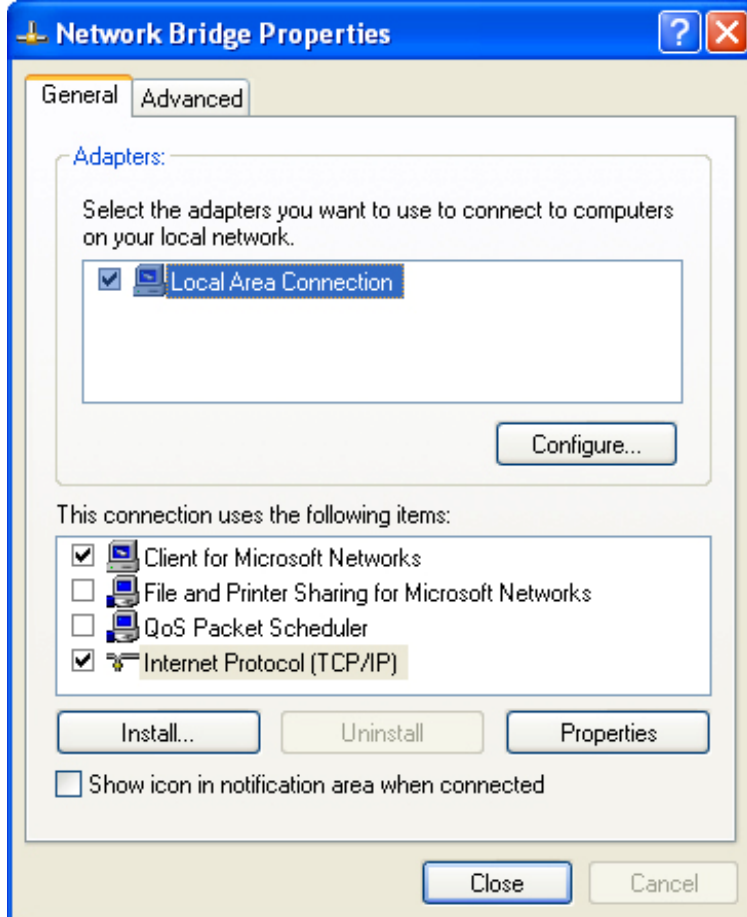


## Configuring your PC

1. After the installation window closes you must go to Start > Settings > Control Panel. Once you are in the Control Panel open Network Connections.
2. Right Click Network Bridge. Then choose Properties.



3. In Network Bridge Properties check the Local Area Connection box. **Note:** Doing so will disable any other network connection, i.e. internet. In order to use internet you will need to use a wireless or external adapter (i.e. PCMCIA Card, USB to Ethernet Adapter, etc.) **(DO NOT USE THE SMC USB TO ETHERNET ADAPTER)**. In this step you will need to click on Internet Protocol so that it is highlighted. Then click on Properties. A new window will open.

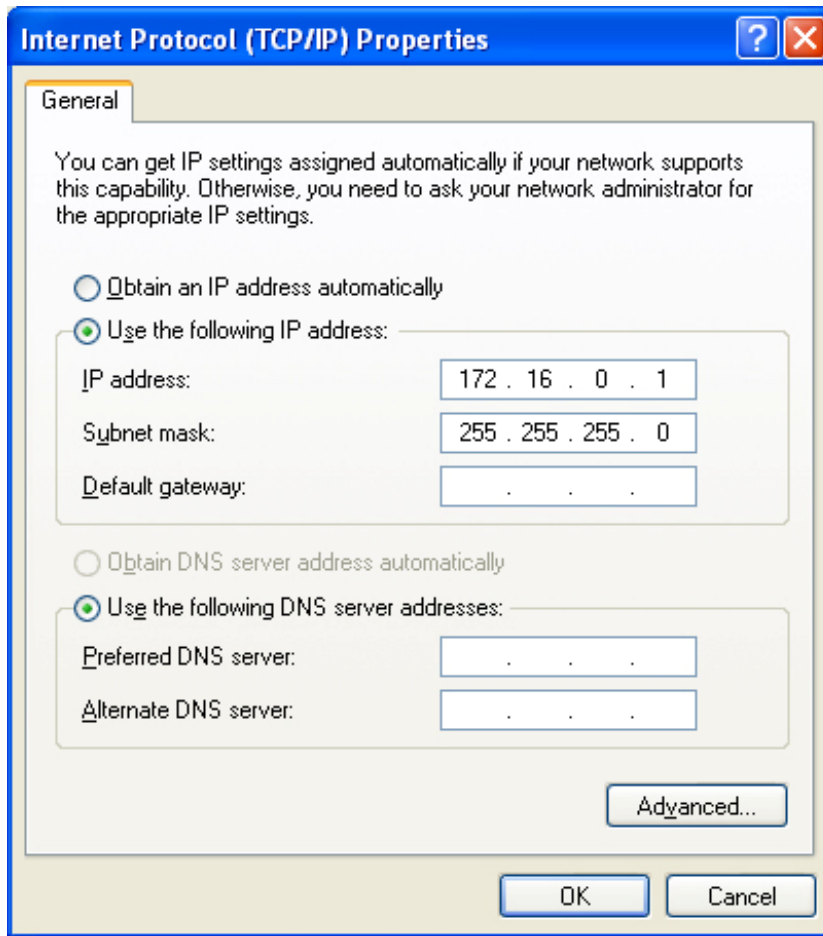


4. Click “Use the following IP address.” Use the following:

IP address: 172.16.0.1

Subnet mask: 255.255.255.0

**Note:** Subnet Mask default will use 255.255.0.0, it is important that you make sure that it is 255.255.255.0



5. Click ok and close. You have just set up the Network Bridge!