



Jump Start Contents

- Tool Overview
- Charging The Battery Pack
- Initial Setup
- Cable Connections
- Where To Find Help

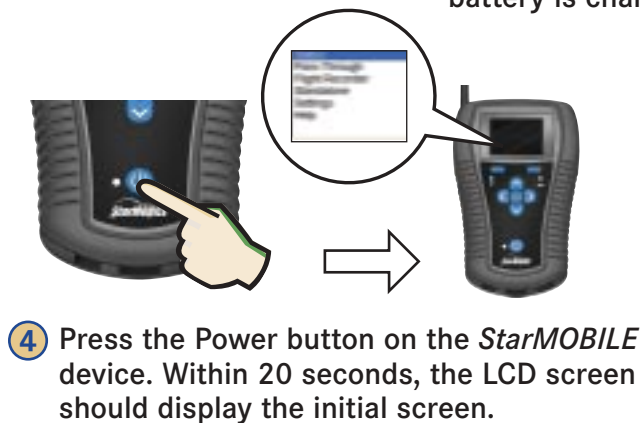
Tool Overview



Charging The Battery Pack



- 1 Plug the AC adapter supplied with the *StarMOBILE* kit into the DC power connection of the *StarMOBILE* and the AC power cord into a suitable wall outlet.
- 2 With the *StarMOBILE* device powered off, observe that the power LED of the *StarMOBILE* system is blinking **red**. This indicates that the battery is charging.
- 3 Allow the *StarMOBILE* system to charge for at least four hours. The rate at which the LED blinks should reduce in frequency. However, since the system will continue to charge, the LED may occasionally blink **red**.



- 4 Press the Power button on the *StarMOBILE* device. Within 20 seconds, the LCD screen should display the initial screen.



- 5 Unplug the AC adapter and ensure that the device remains powered.

Initial Setup

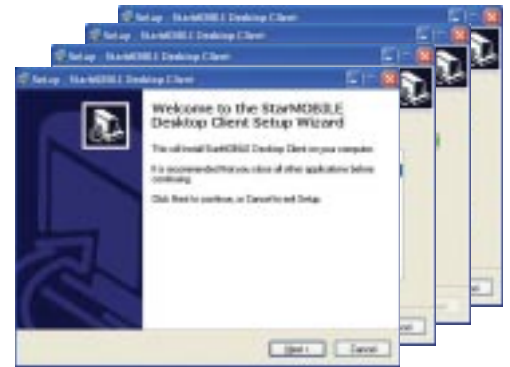


- 1 Insert installation CD.

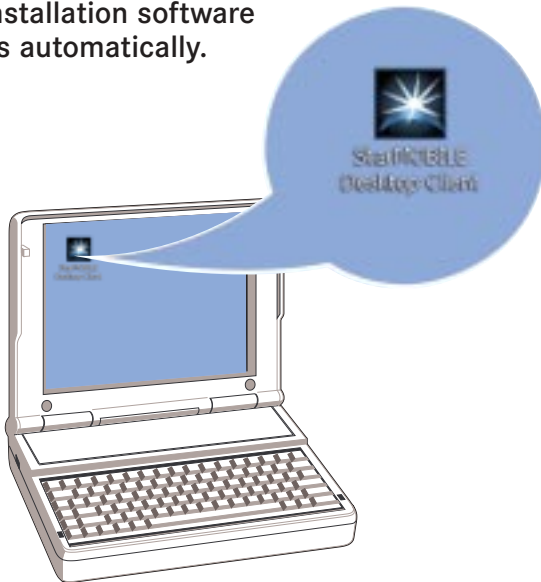
The installation software begins automatically.



- 2 Select Install Desktop Client.



- 3 Follow the steps of the installation wizard.



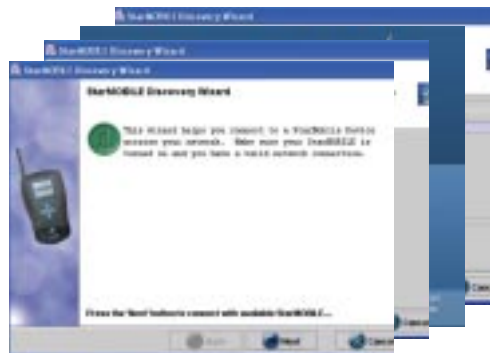
- 4 When finished, the *StarMOBILE* Desktop Client icon should appear on the desktop.



- 5 Plug the *StarMOBILE* unit into the AC adapter and connect the Ethernet cable to the same network segment as the PC.



- 6 Double click the *StarMOBILE* Desktop Client icon to launch the application.



- 7 Follow the instructions of the *StarMOBILE* Discovery wizard.



- 8 Your *StarMOBILE* system is now ready for use as a pass-through device. See the "training aids" at www.dcctools.com to see animated how-to tutorials of many vehicle diagnostic operations.

Cable Connections



Use USB storage device to load software updates onto the tool.

Press USB storage device firmly into USB jack.



Use network (Ethernet) cable to connect *StarMOBILE* to dealership network.

Press network cable into network jack until it clicks.



Tighten screws on connector to lock cable into place.



Where To Find Help

Go to www.dcctools.com for more information on *StarMOBILE*.

- Read-Me First
- Quick Reference Guide
- Download Center & Training Aids

